



Delivering Excellence Every Day



**MIAMI-DADE COUNTY
CORRECTIONS & REHABILITATION DEPARTMENT**

**INMATE GRIEVANCE REPORT
FY 2007-2008
REVISED**

**TIMOTHY P. RYAN
DIRECTOR**



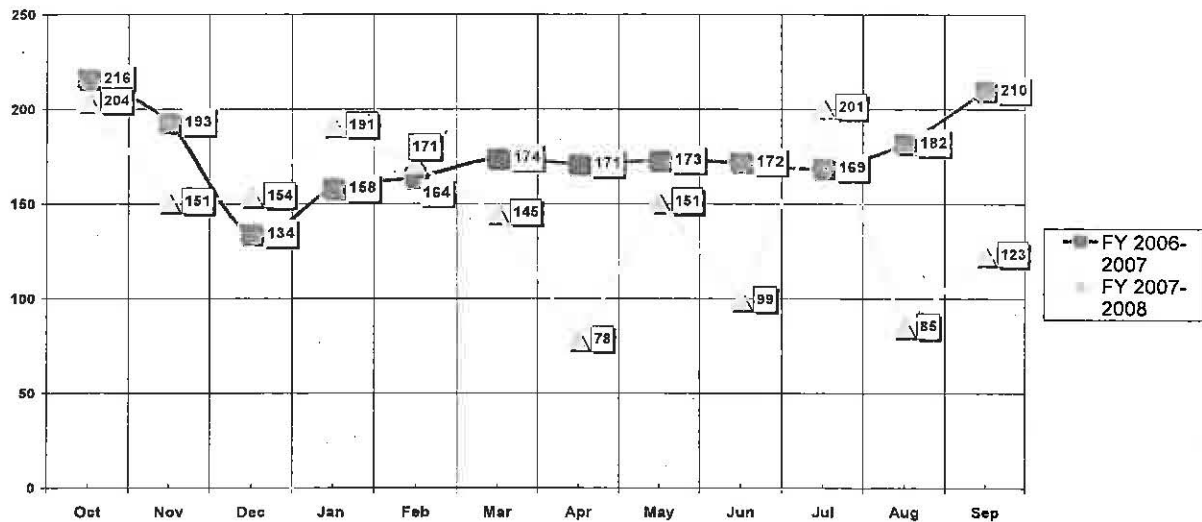
MIAMI-DADE COUNTY CORRECTIONS AND REHABILITATION DEPARTMENT

INMATE GRIEVANCES REPORT BRIEFING Fiscal Year 2007- 2008

INTRODUCTION

For FY 07-08, there have been 1,753 inmate grievances reported (an average of 5 per day and 146 per month). The inmate grievances rate per 100 inmates decreased by 18% in FY 07-08 (2.08) when compared to FY 06-07 (2.54). October had the most grievances reported with 204 (48% over the monthly average), while April had the lowest with 78 (47% under the monthly average). This year, inmate grievances reported declined by 17% (-363) compared to last year (FY 06-07: 2,116).

DEPARTMENT-WIDE
INMATE GRIEVANCES
YEARLY COMPARISON



The top five category types of inmate grievances reported are as follows:

- 1) Medical care 37% (640)
- 2) Miscellaneous 13% (221)
- 3) Facility operations 11% (193)
- 4) Food services 9% (153)
- 5) Staff complaints 6% (113)

FACILITY SPECIFIC

Percent of total inmate grievances by facilities are as follows:

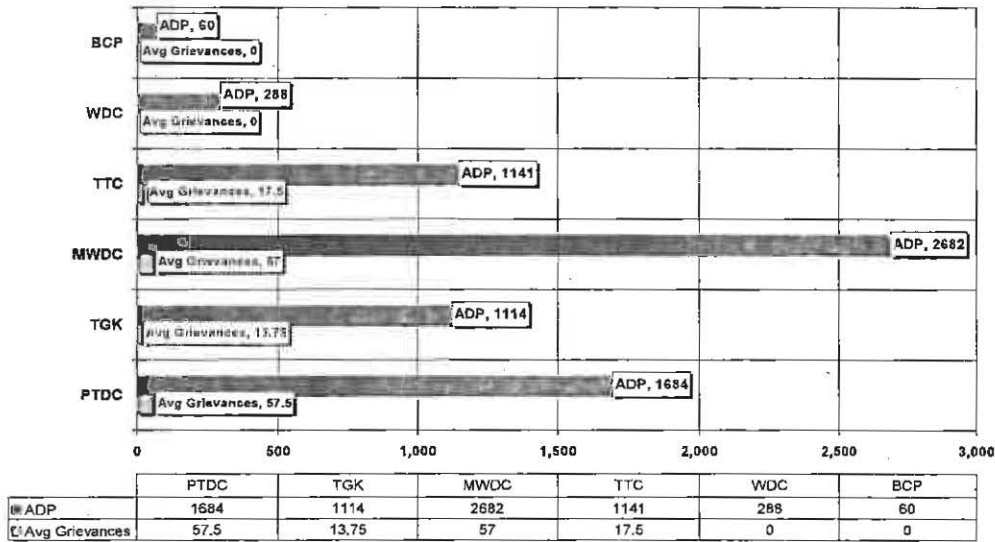
- 1) PTDC: 40% (690)
- 2) MWDC: 39% (688)



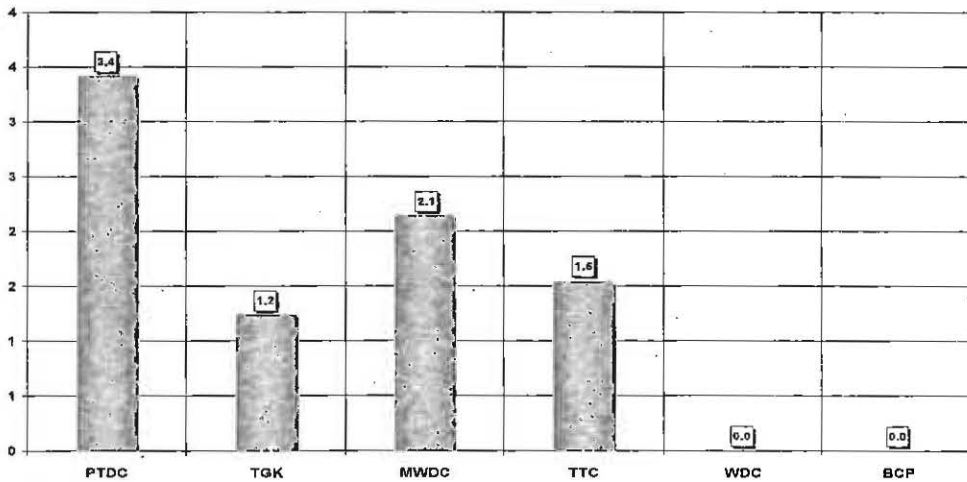
**MIAMI-DADE COUNTY
CORRECTIONS AND REHABILITATION DEPARTMENT**

- 3) TTC: 12% (210)
- 4) TGK: 9% (165)
- 5) WDC: 0% (0)
- 6) BCP: 0% (0)

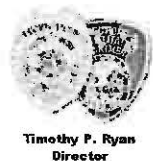
*DEPARTMENT-WIDE
INMATE GRIEVANCES
FY 2007-2008
ADP VS AVERAGE NO. OF MONTHLY GRIEVANCE REPORTS*



*DEPARTMENT-WIDE
INMATE GRIEVANCES
RATE PER 100 INMATES BY FACILITY
FY 2007-2008*



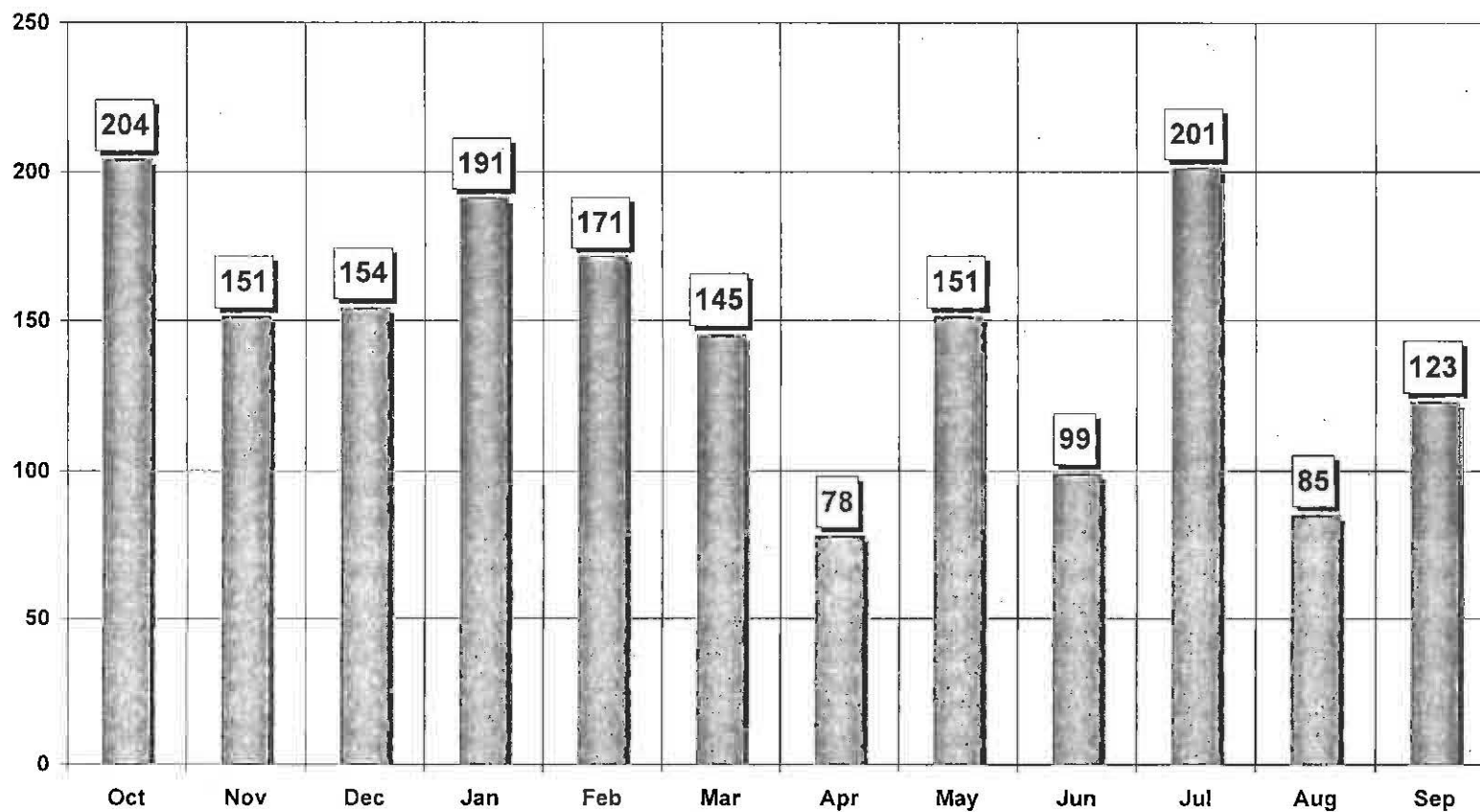
Source: Primary Indicator Report Network (12/05/08)



MIAMI-DADE COUNTY CORRECTIONS AND REHABILITATION DEPARTMENT



DEPARTMENT-WIDE INMATE GRIEVANCES FY 2007-2008

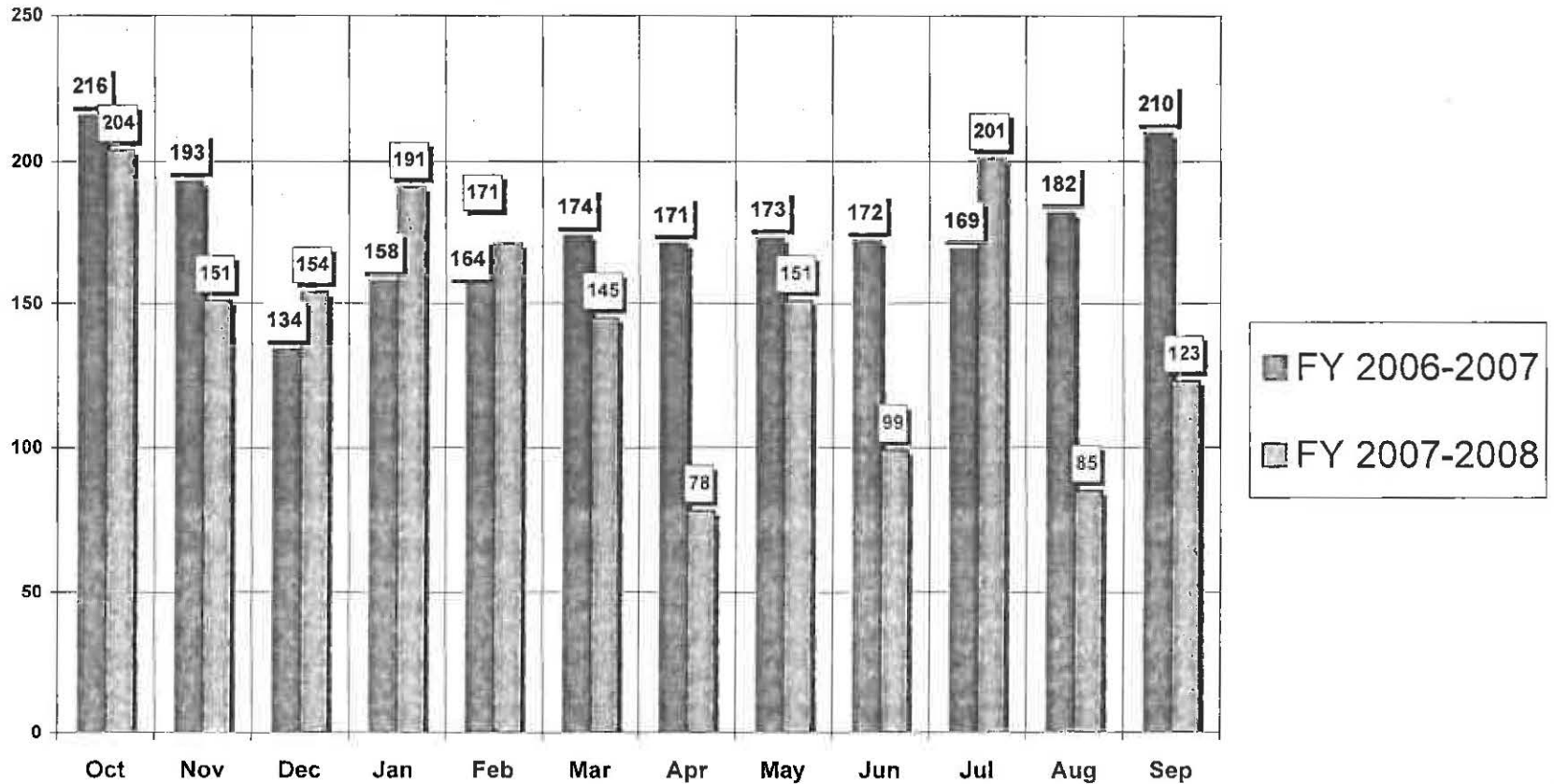




MIAMI-DADE COUNTY CORRECTIONS AND REHABILITATION DEPARTMENT



DEPARTMENT-WIDE INMATE GRIEVANCES YEARLY COMPARISON

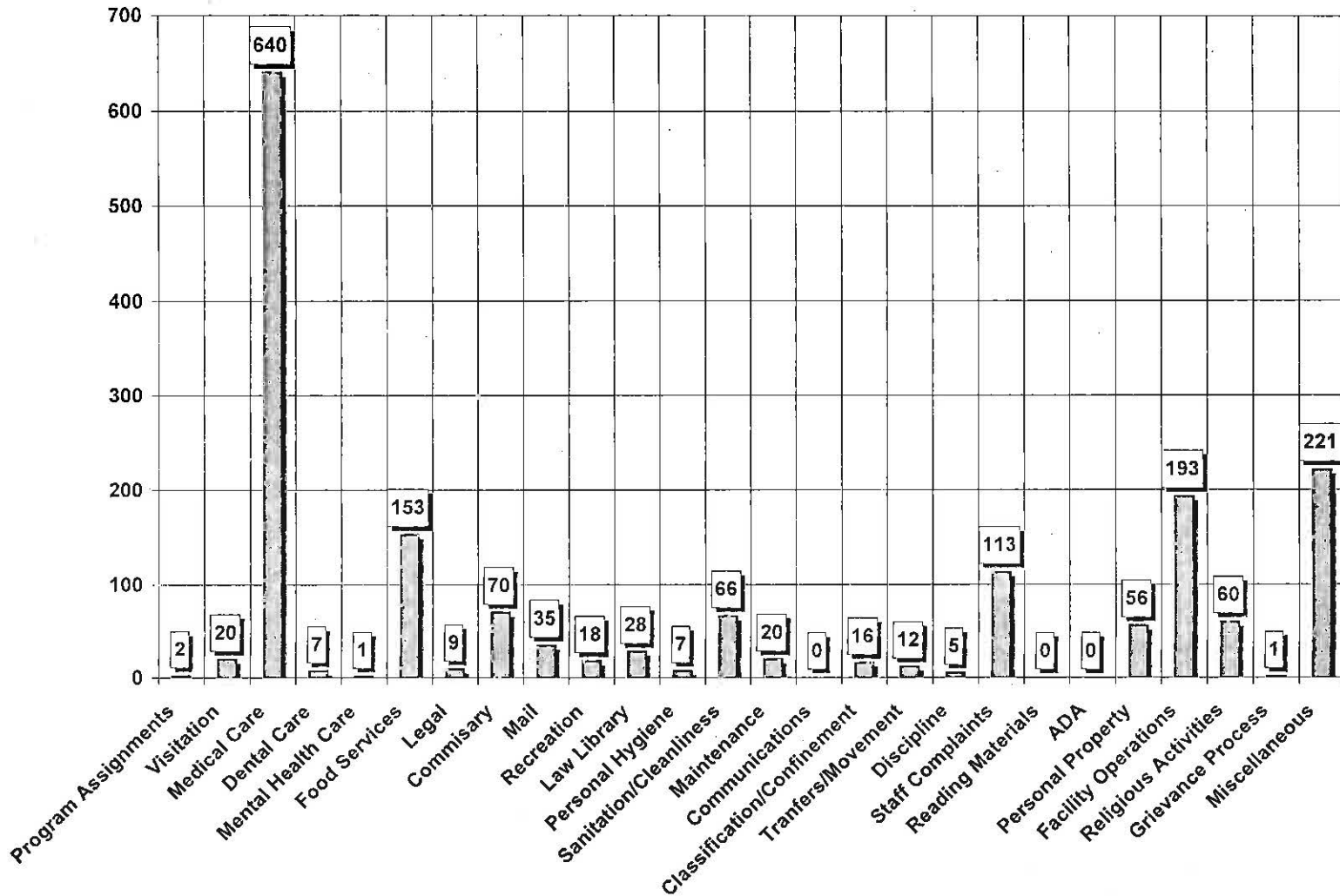




MIAMI-DADE COUNTY CORRECTIONS AND REHABILITATION DEPARTMENT



DEPARTMENT-WIDE INMATE GRIEVANCES BY TYPE FY 2007-2008



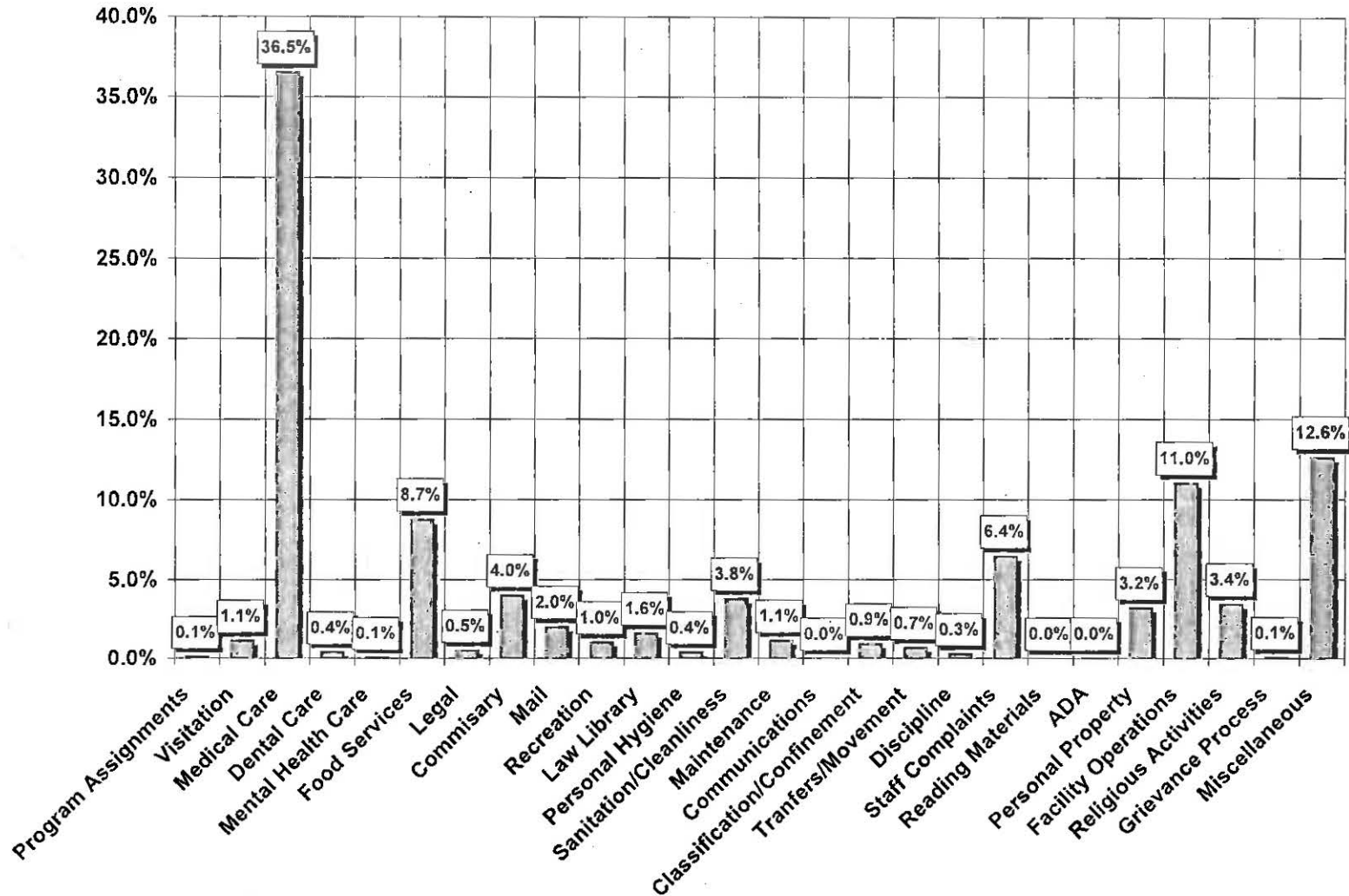


Timothy P. Ryan
Director

MIAMI-DADE COUNTY CORRECTIONS AND REHABILITATION DEPARTMENT



DEPARTMENT-WIDE PERCENTAGE OF INMATE GRIEVANCES BY TYPE FY 2007-2008

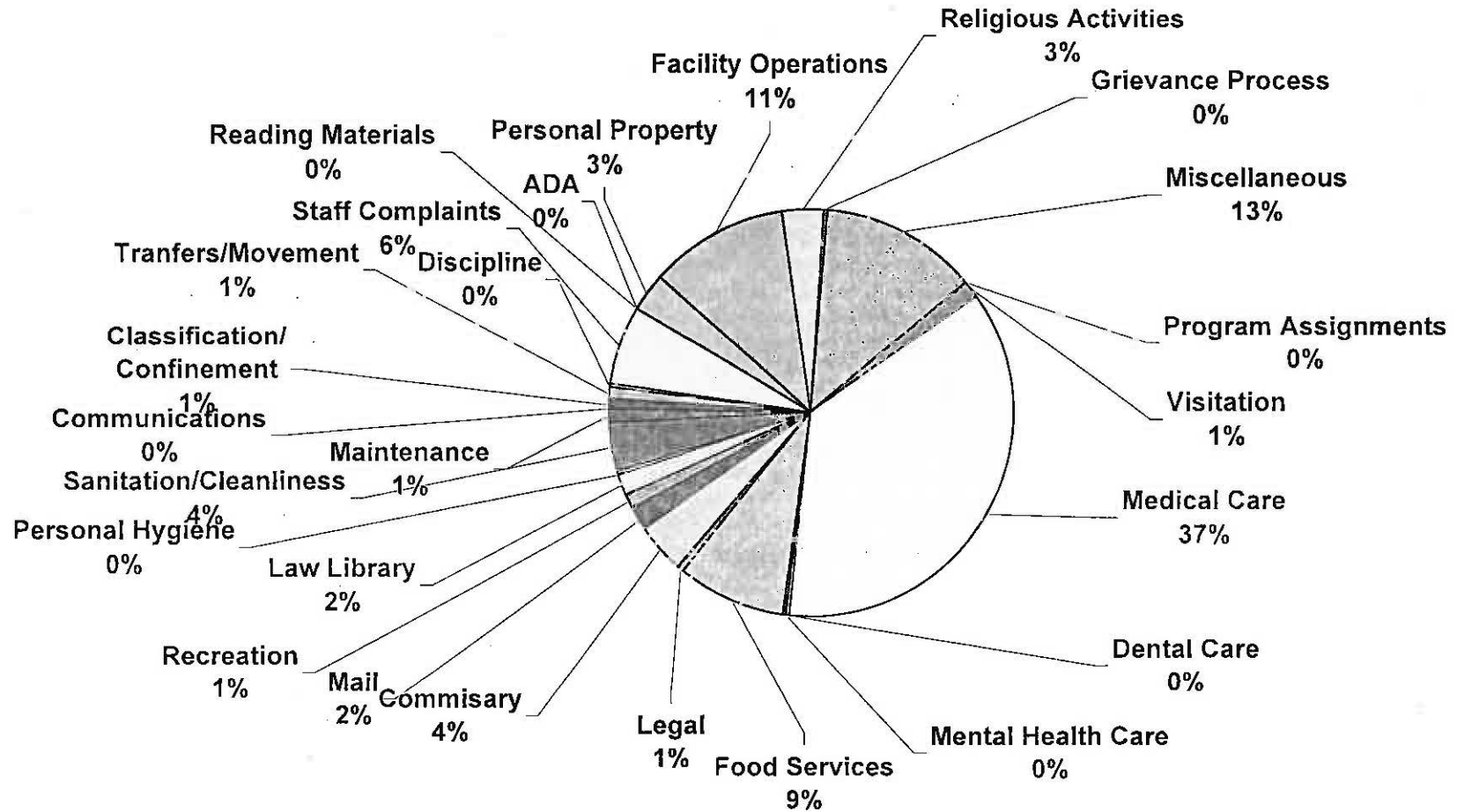




MIAMI-DADE COUNTY CORRECTIONS AND REHABILITATION DEPARTMENT



DEPARTMENT-WIDE SANCTIONS FY 2007-2008

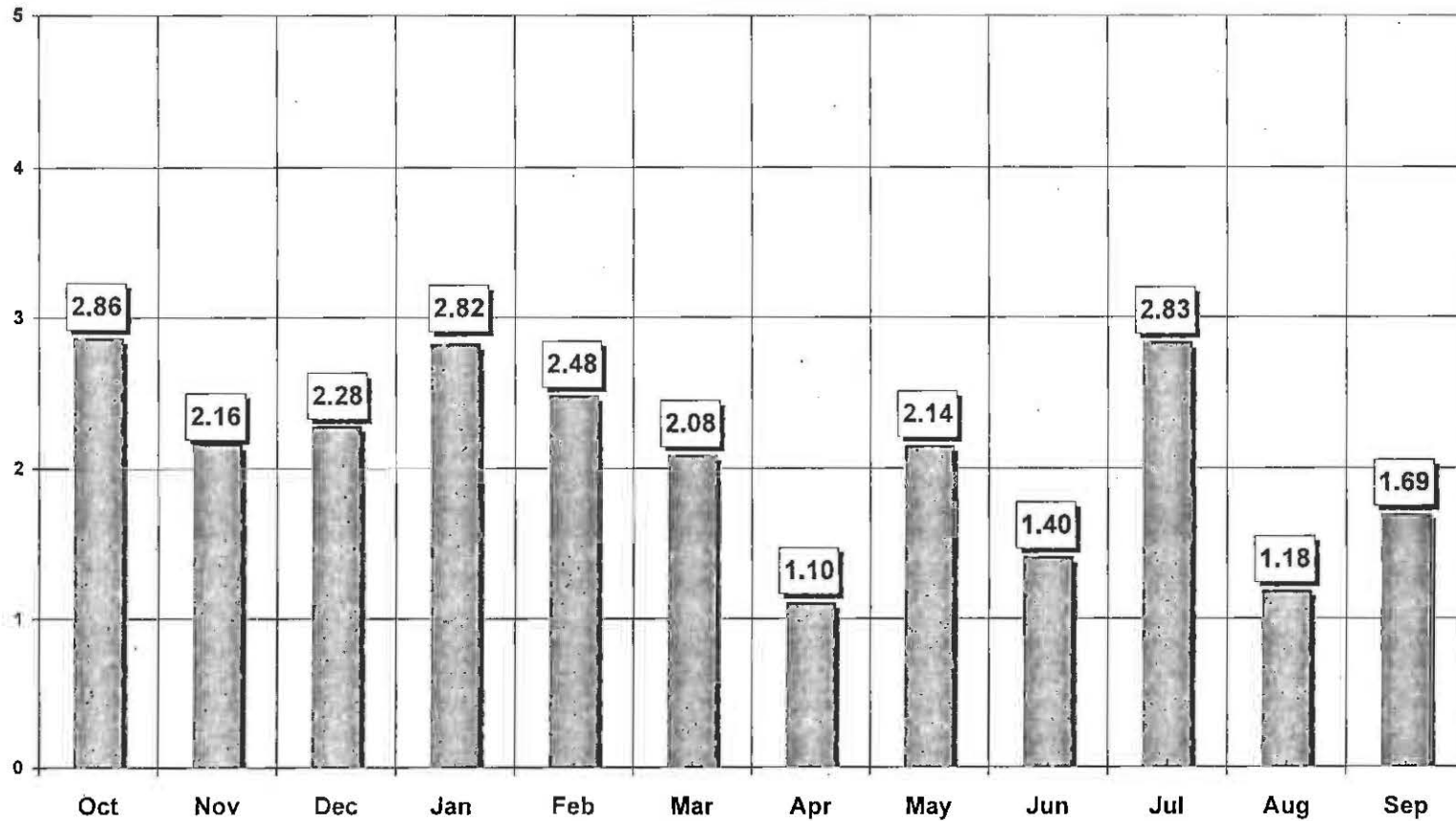




MIAMI-DADE COUNTY CORRECTIONS AND REHABILITATION DEPARTMENT



DEPARTMENT-WIDE INMATE GRIEVANCES PER 100 INMATES FY 2007-2008

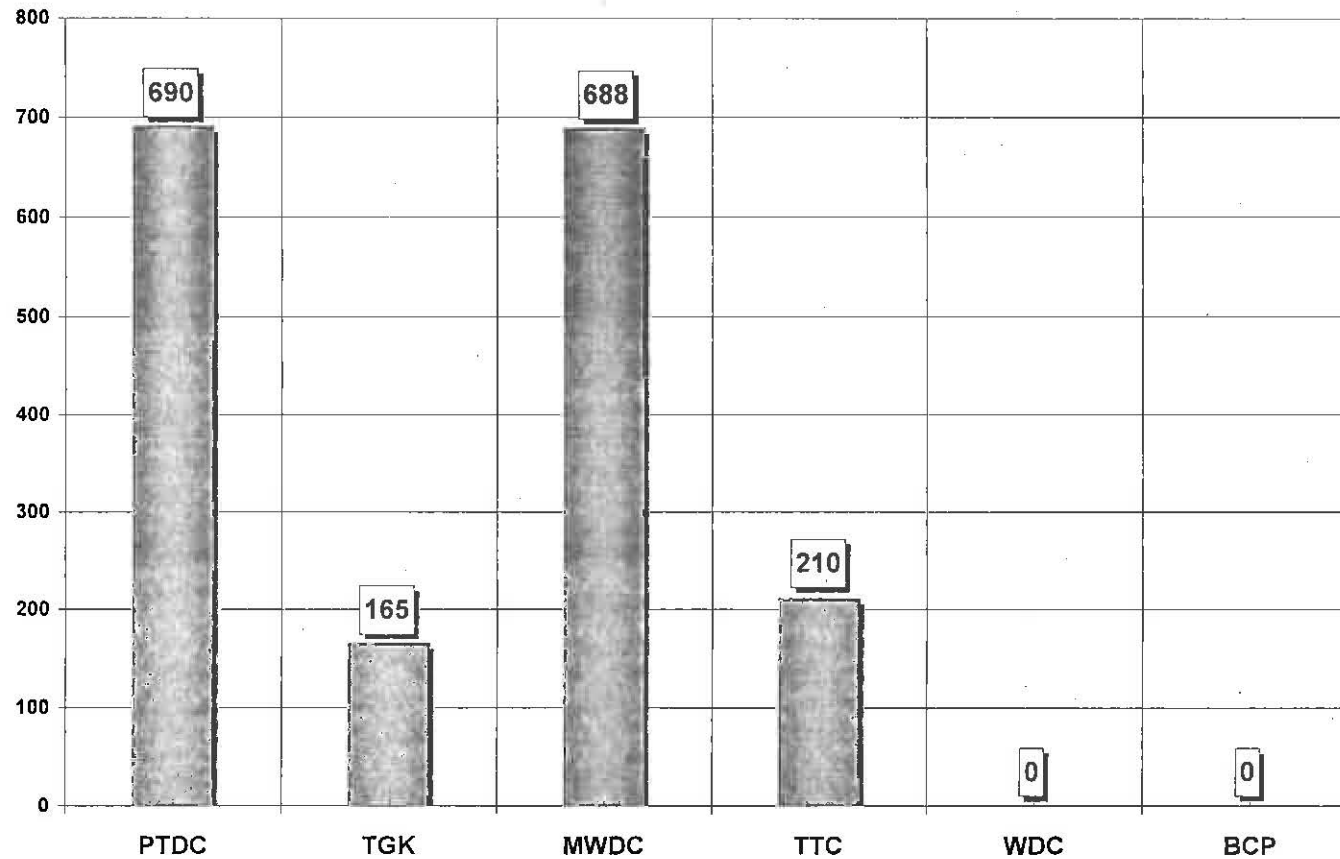




MIAMI-DADE COUNTY CORRECTIONS AND REHABILITATION DEPARTMENT



DEPARTMENT-WIDE INMATE GRIEVANCES FY 2007-2008

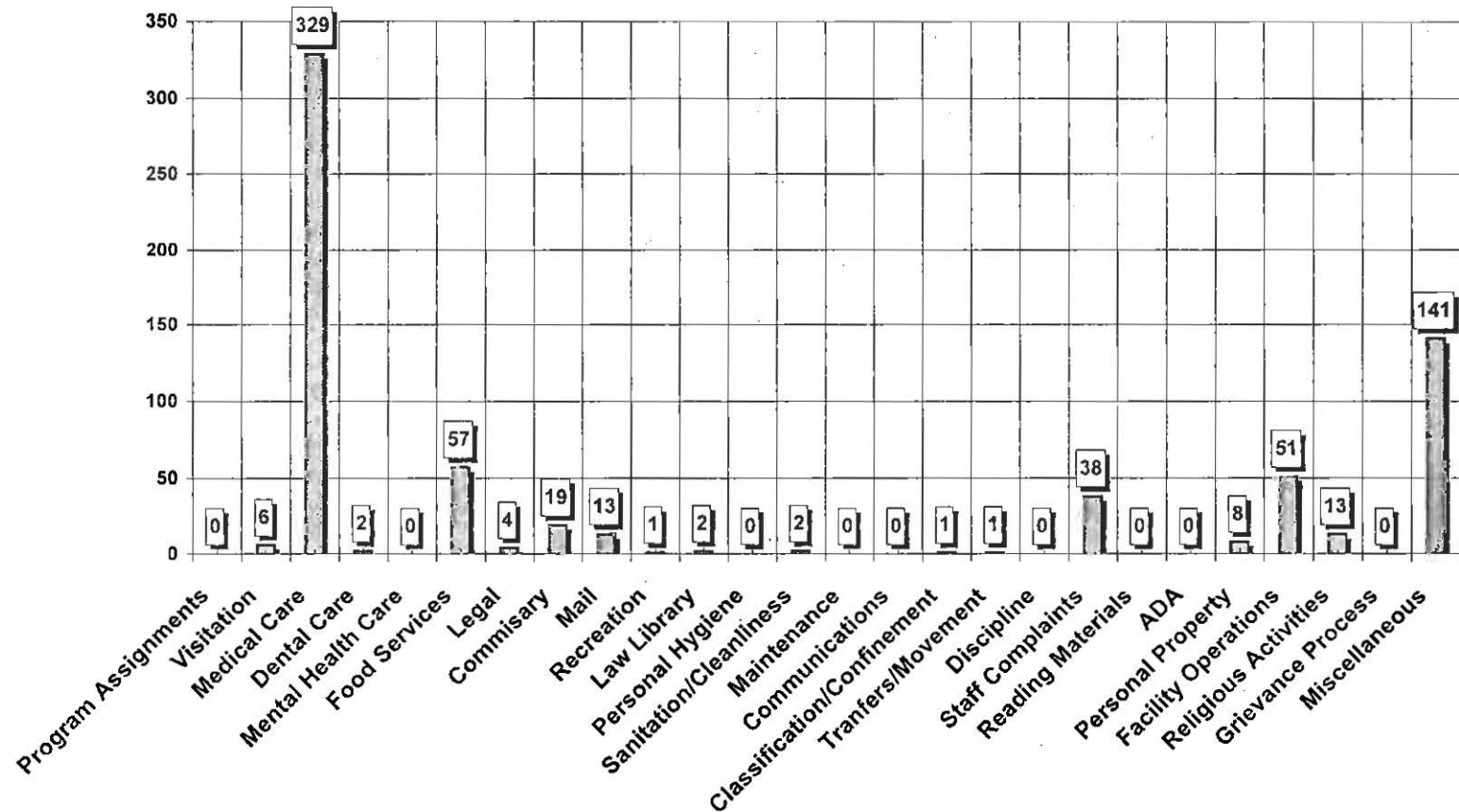




MIAMI-DADE COUNTY CORRECTIONS AND REHABILITATION DEPARTMENT



METRO WEST DETENTION CENTER INMATE GRIEVANCES FY 2007-2008

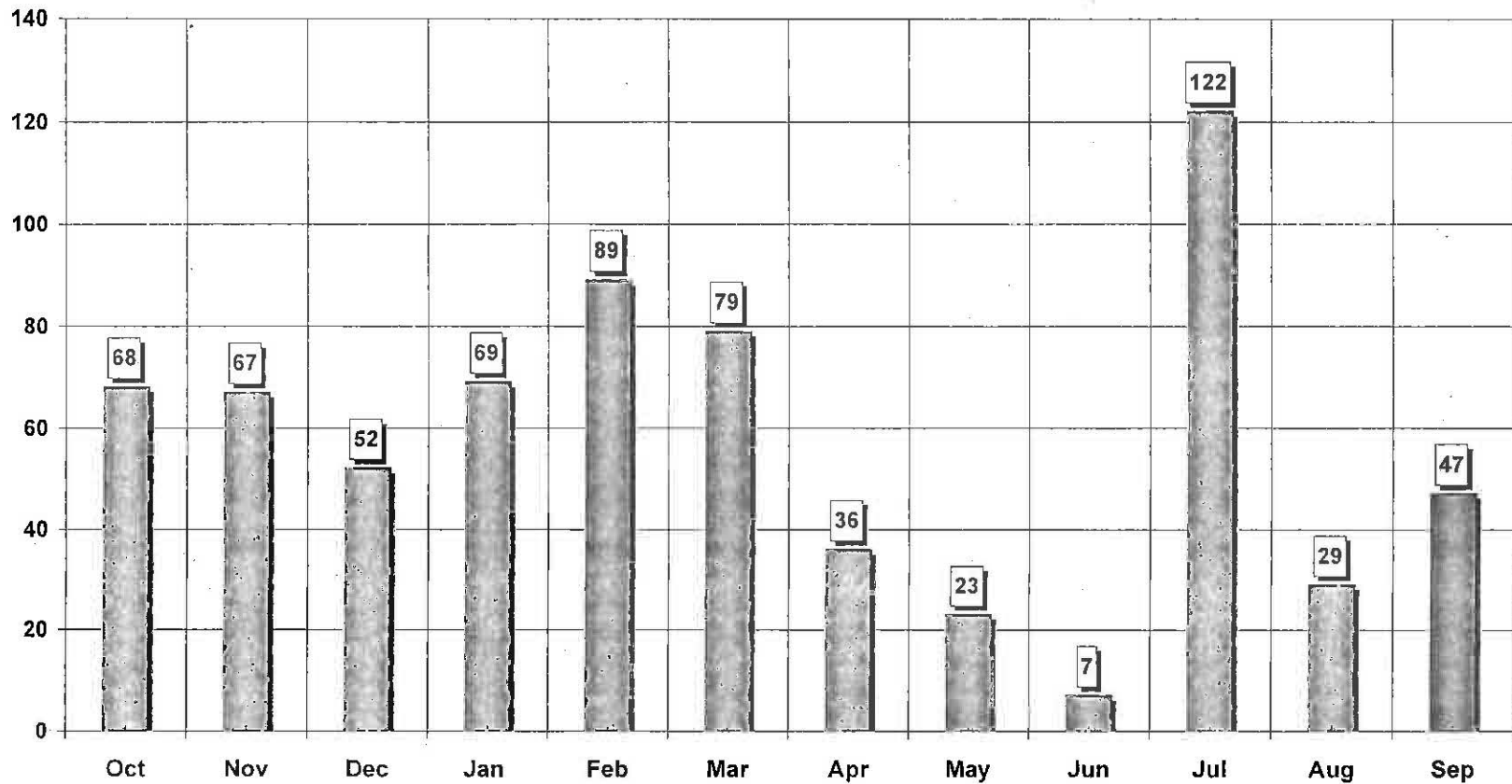


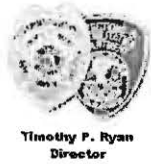


MIAMI-DADE COUNTY
CORRECTIONS AND REHABILITATION DEPARTMENT



*METRO WEST DETENTION CENTER
INMATE GRIEVANCES
FY 2007-2008*

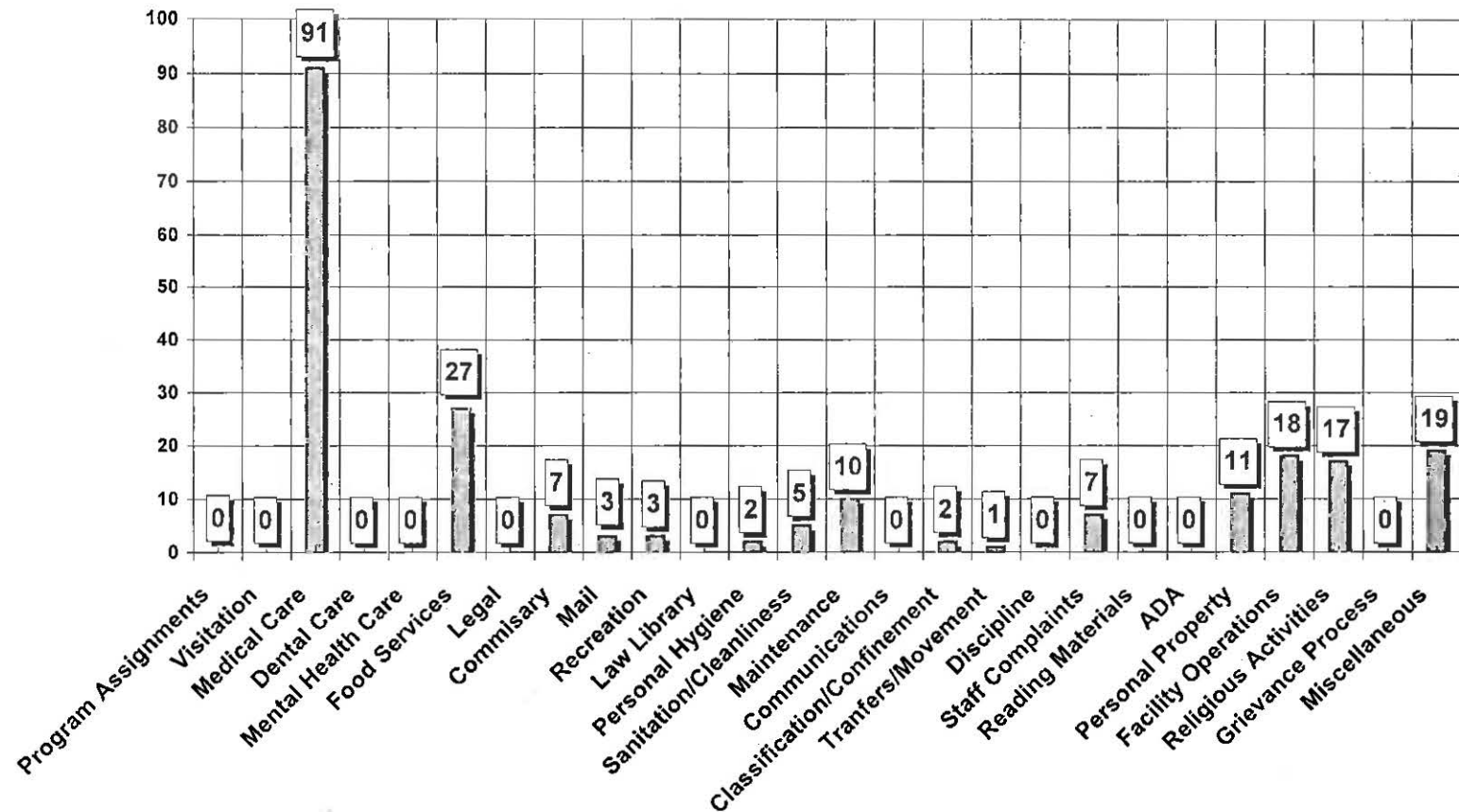




MIAMI-DADE COUNTY CORRECTIONS AND REHABILITATION DEPARTMENT



TRAINING & TREATMENT CENTER INMATE GRIEVANCES FY 2007-2008

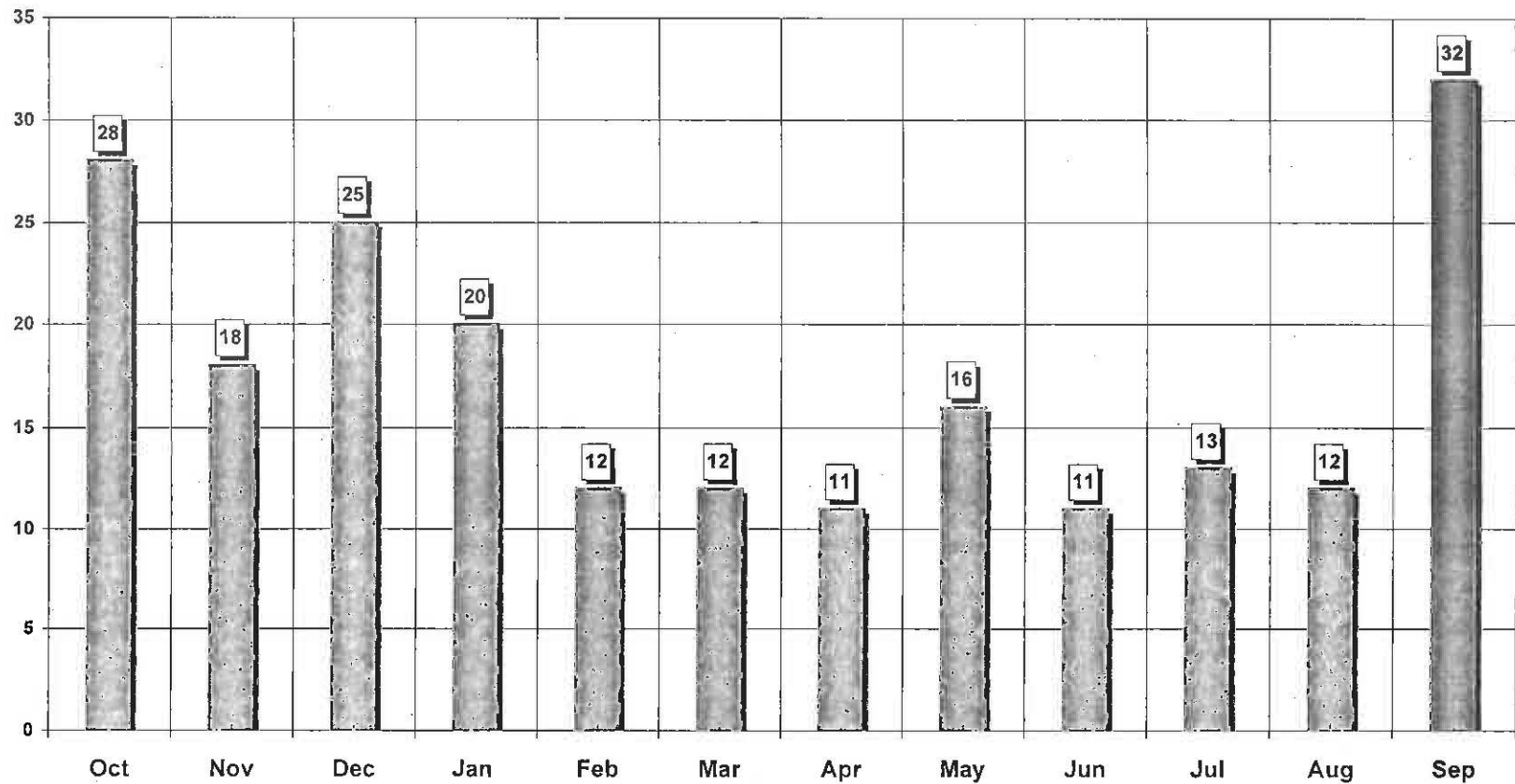




MIAMI-DADE COUNTY CORRECTIONS AND REHABILITATION DEPARTMENT



TRAINING & TREATMENT CENTER INMATE GRIEVANCES FY 2007-2008



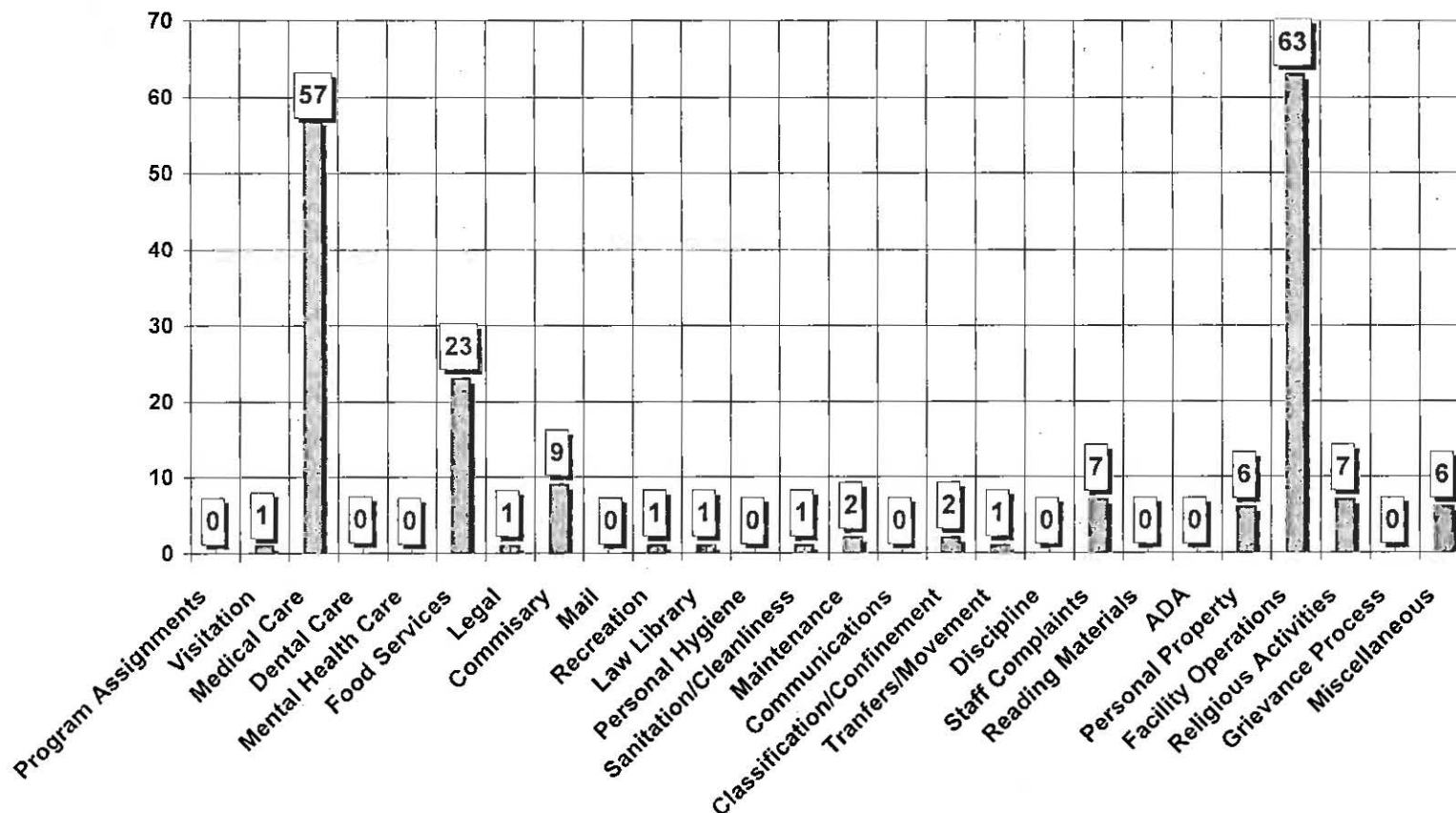


Timothy P. Ryan
Director

MIAMI-DADE COUNTY CORRECTIONS AND REHABILITATION DEPARTMENT



TURNER GUILFORD KNIGHT CORRECTIONAL CENTER INMATE GRIEVANCES FY 2007-2008

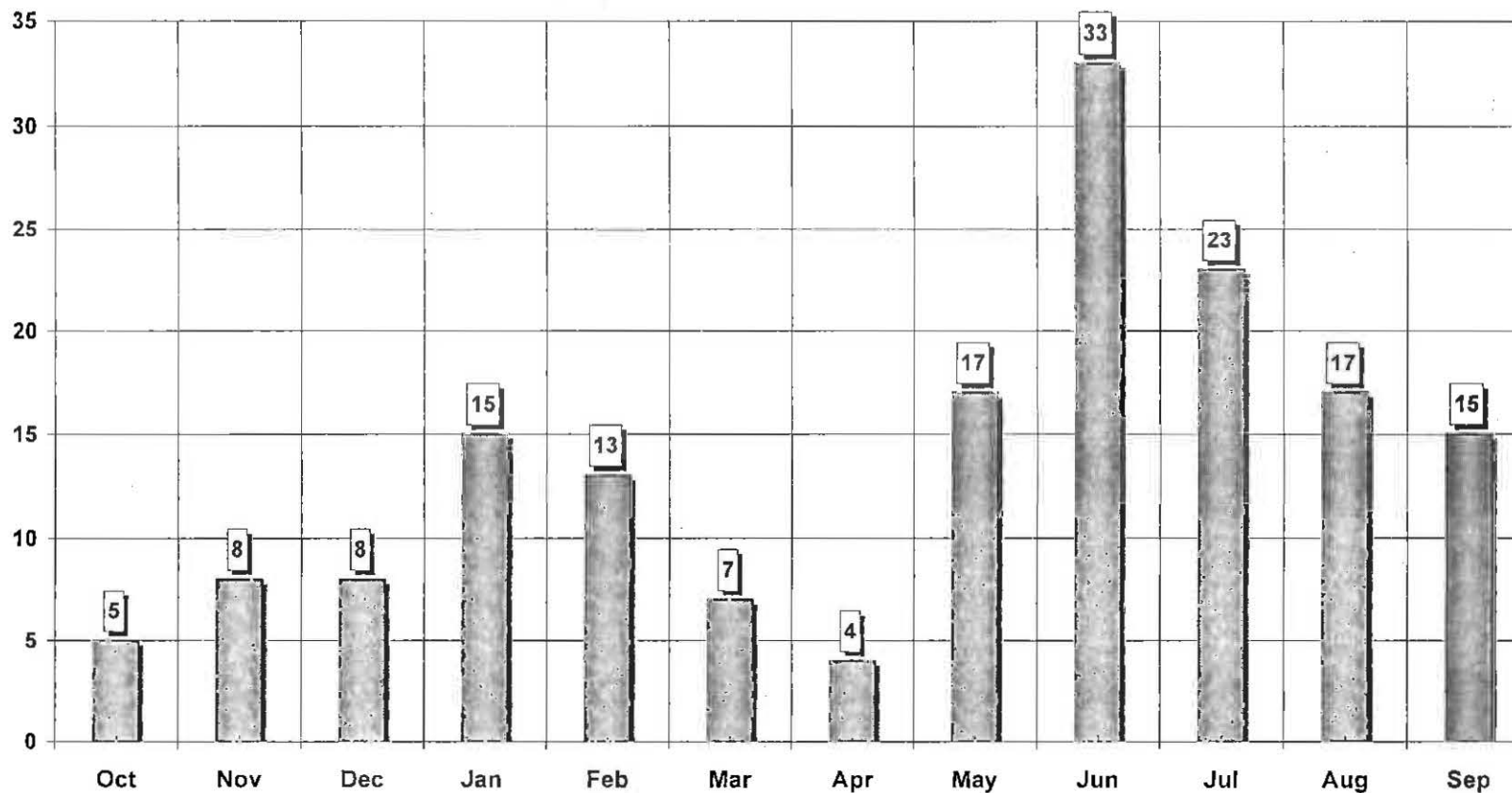




MIAMI-DADE COUNTY
CORRECTIONS AND REHABILITATION DEPARTMENT



TURNER GUILFORD KNIGHT CORRECTIONAL CENTER
INMATE GRIEVANCES
FY 2007-2008



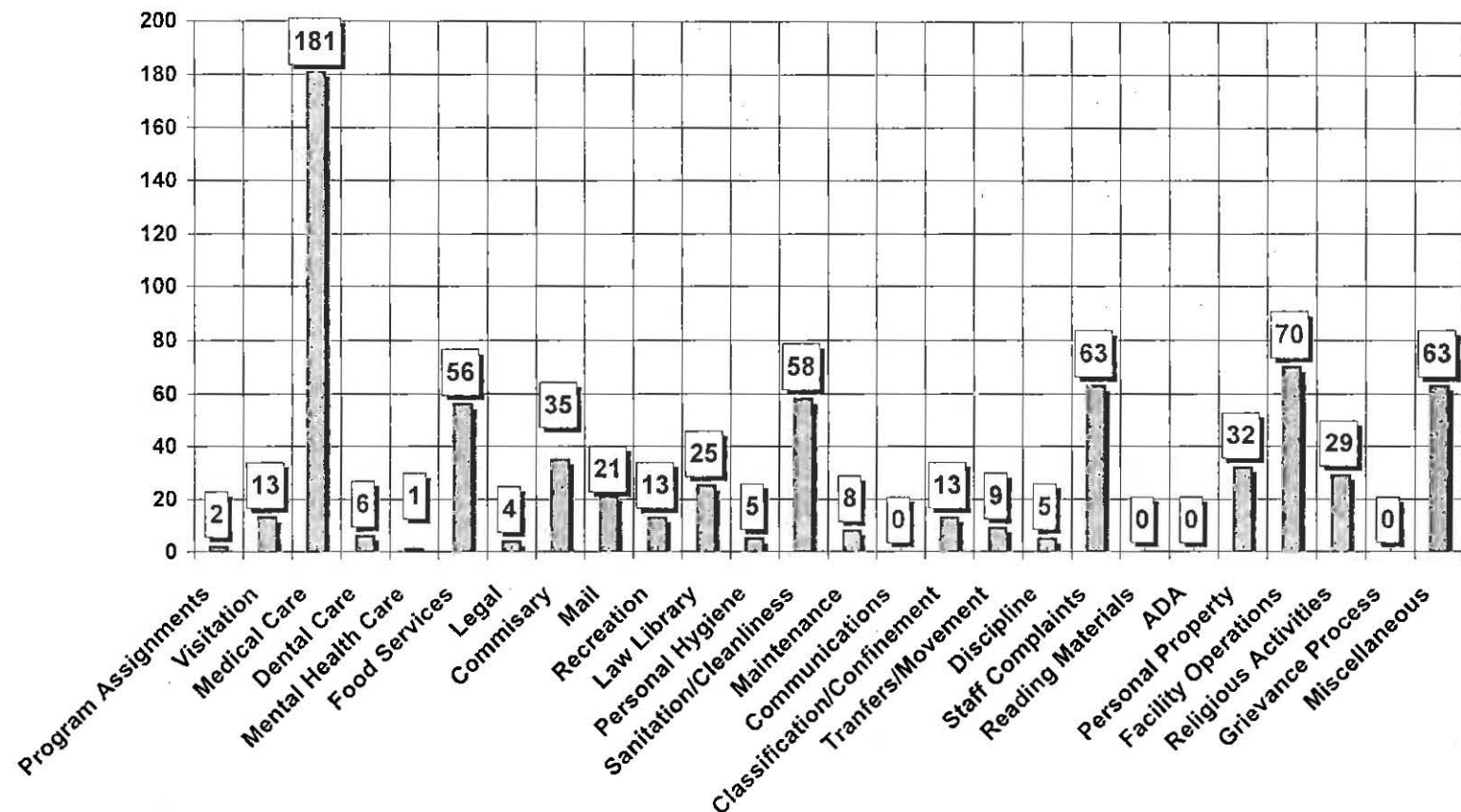


Timothy P. Ryan
Director

MIAMI-DADE COUNTY CORRECTIONS AND REHABILITATION DEPARTMENT



PRE-TRIAL DETENTION CENTER INMATE GRIEVANCES FY 2007-2008

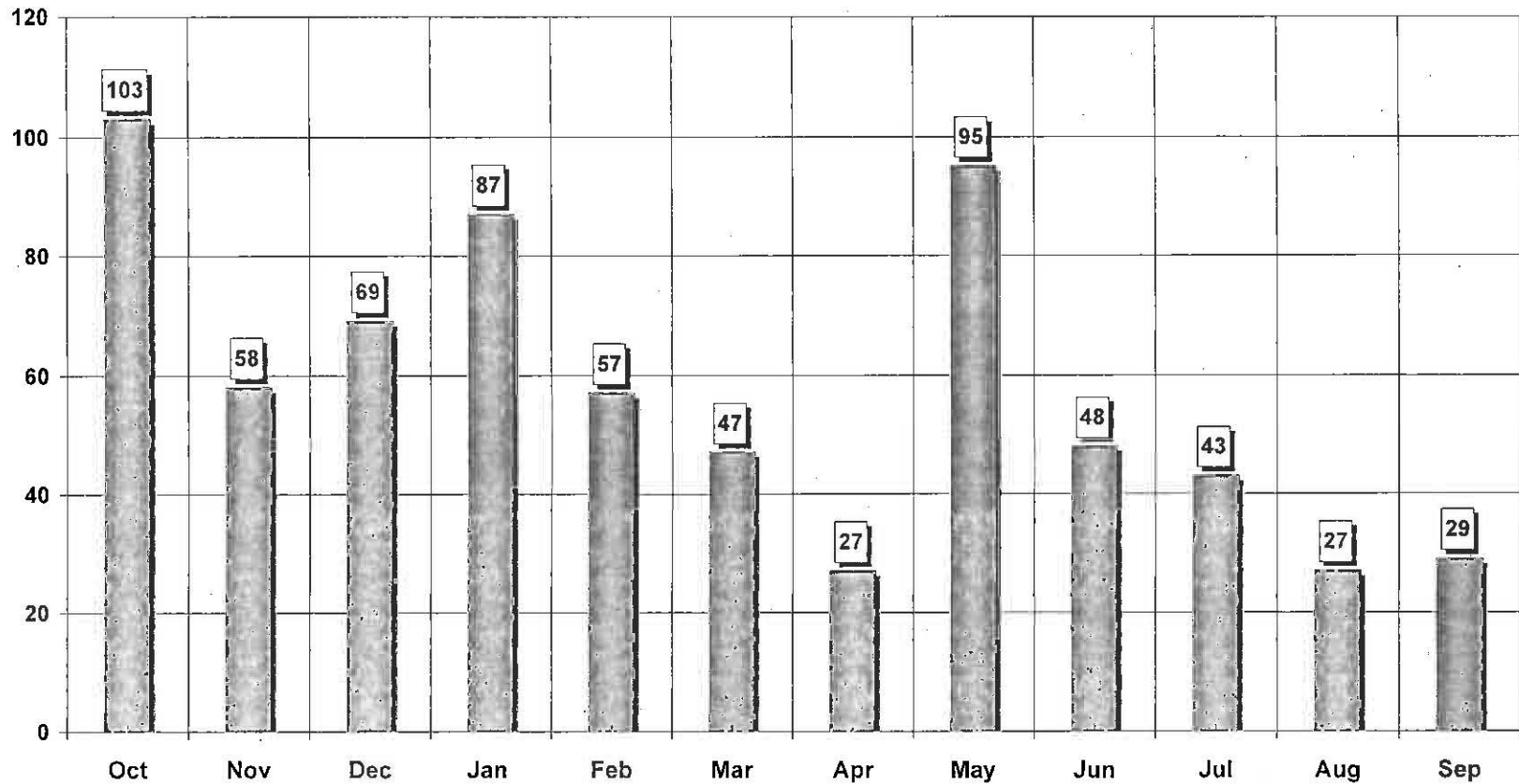




MIAMI-DADE COUNTY CORRECTIONS AND REHABILITATION DEPARTMENT



PRE-TRIAL DETENTION CENTER INMATE GRIEVANCES FY 2007-2008



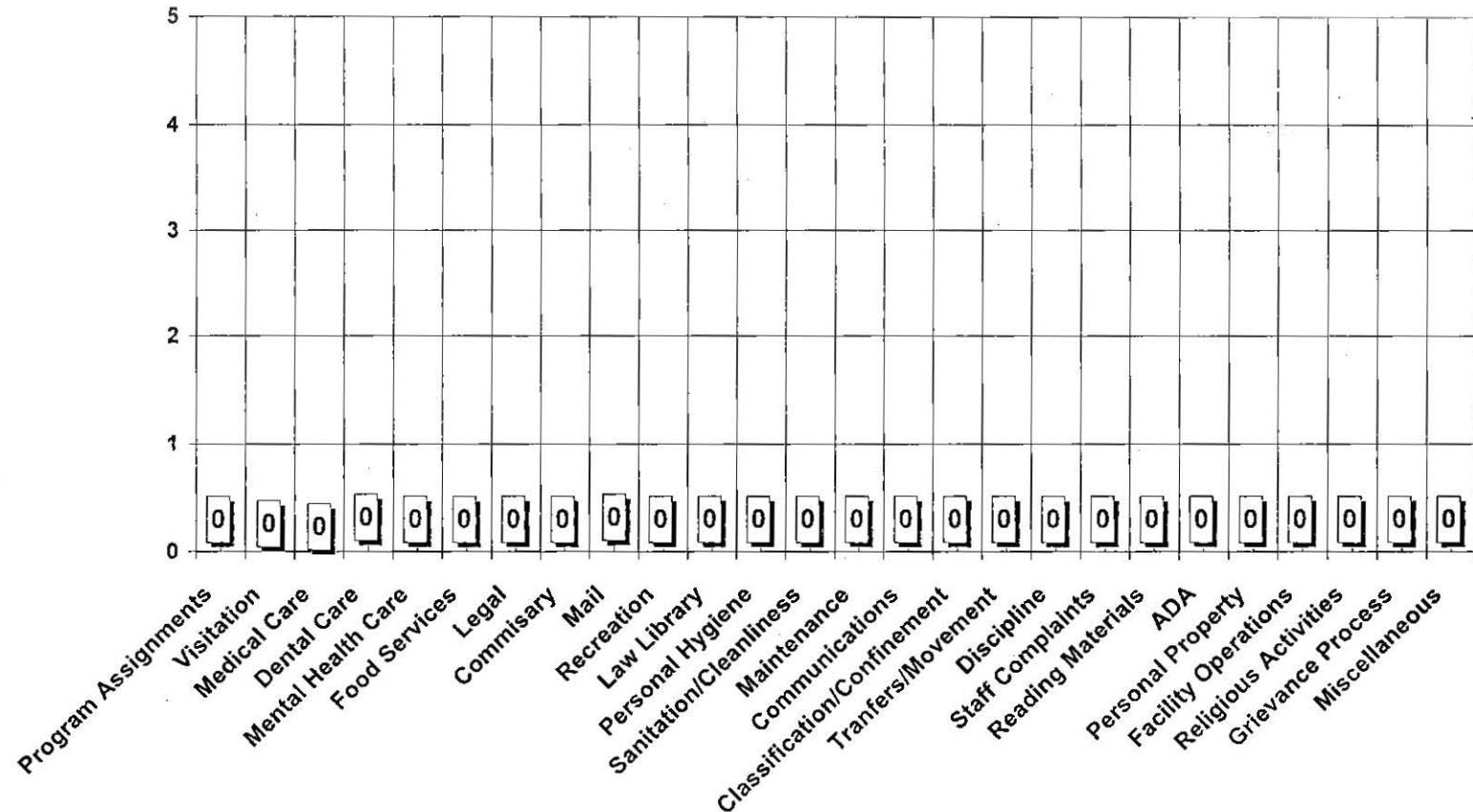


Timothy P. Ryan
Director

MIAMI-DADE COUNTY CORRECTIONS AND REHABILITATION DEPARTMENT



WOMEN'S DETENTION CENTER INMATE GRIEVANCES FY 2007-2008

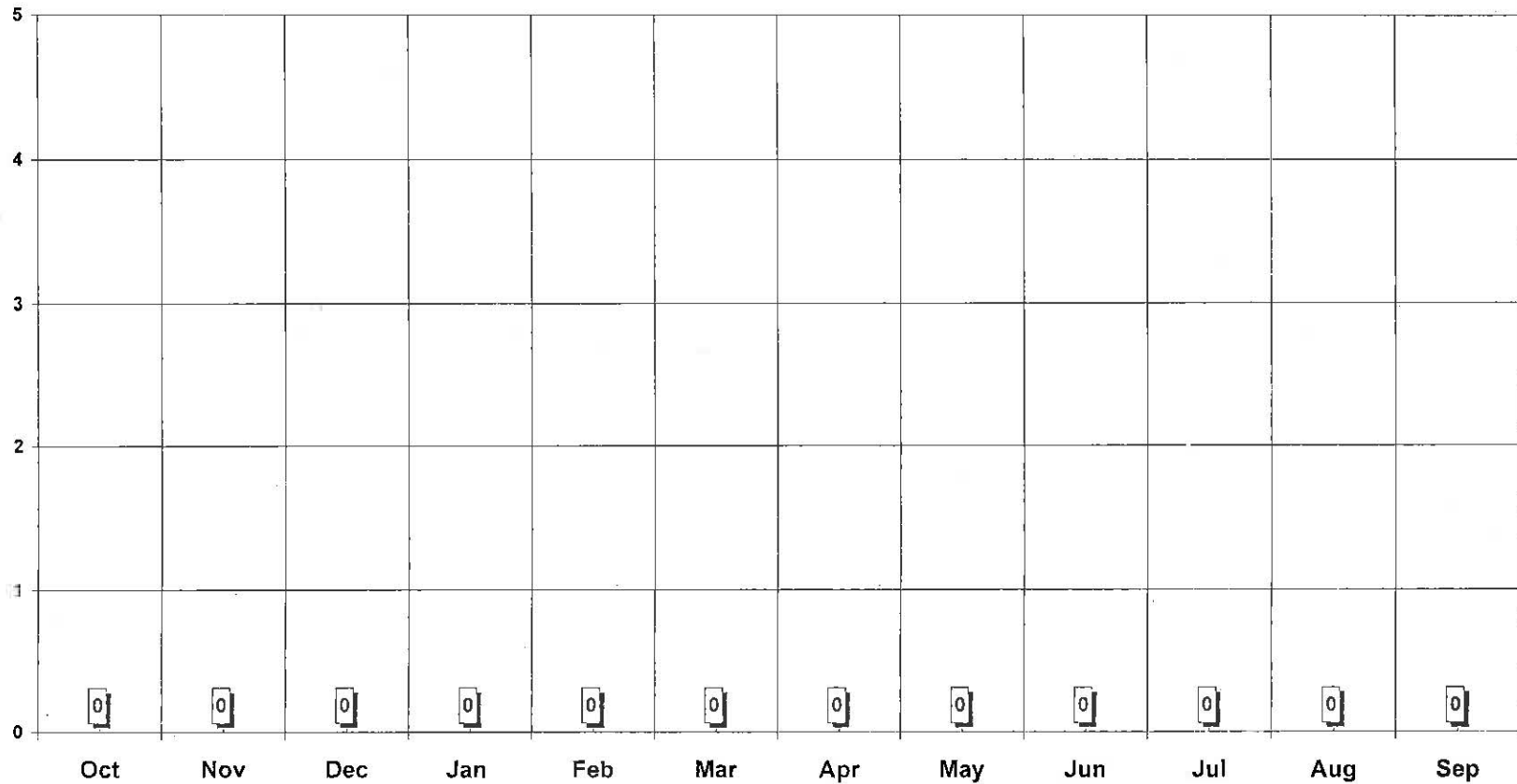




MIAMI-DADE COUNTY
CORRECTIONS AND REHABILITATION DEPARTMENT



WOMEN'S DETENTION CENTER
INMATE GRIEVANCES
FY 2007-2008

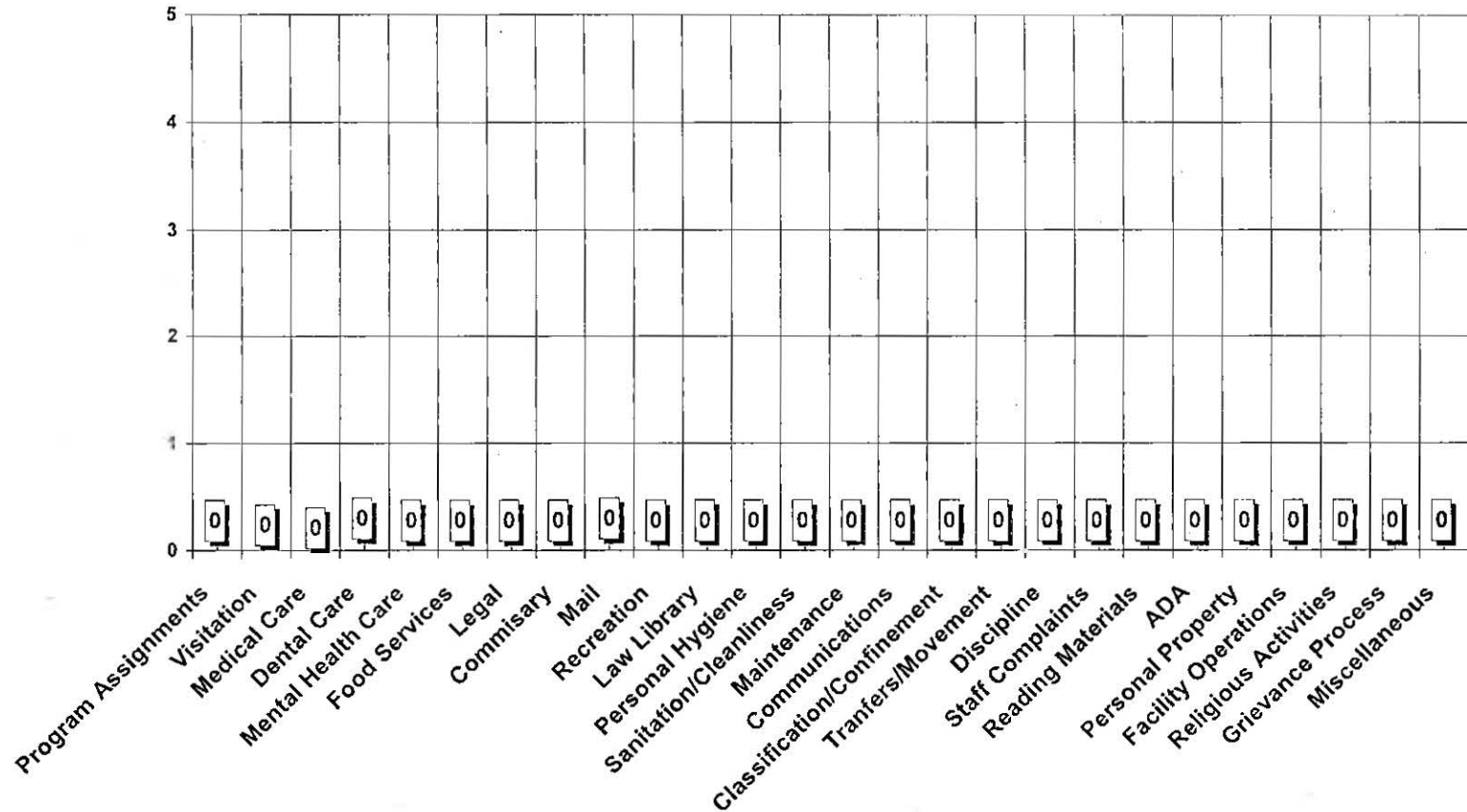




MIAMI-DADE COUNTY CORRECTIONS AND REHABILITATION DEPARTMENT



BOOT CAMP PROGRAM INMATE GRIEVANCES FY 2007-2008





MIAMI-DADE COUNTY CORRECTIONS AND REHABILITATION DEPARTMENT



BOOT CAMP PROGRAM *INMATE GRIEVANCES* FY 2007-2008

